

M10/30

HERITAGE TRACTOR
CODE 133E

ILLUSTRATED PARTS LIST

CODE SERIAL NO.
133E 280000001
ISSUE 01/21/08
1741746

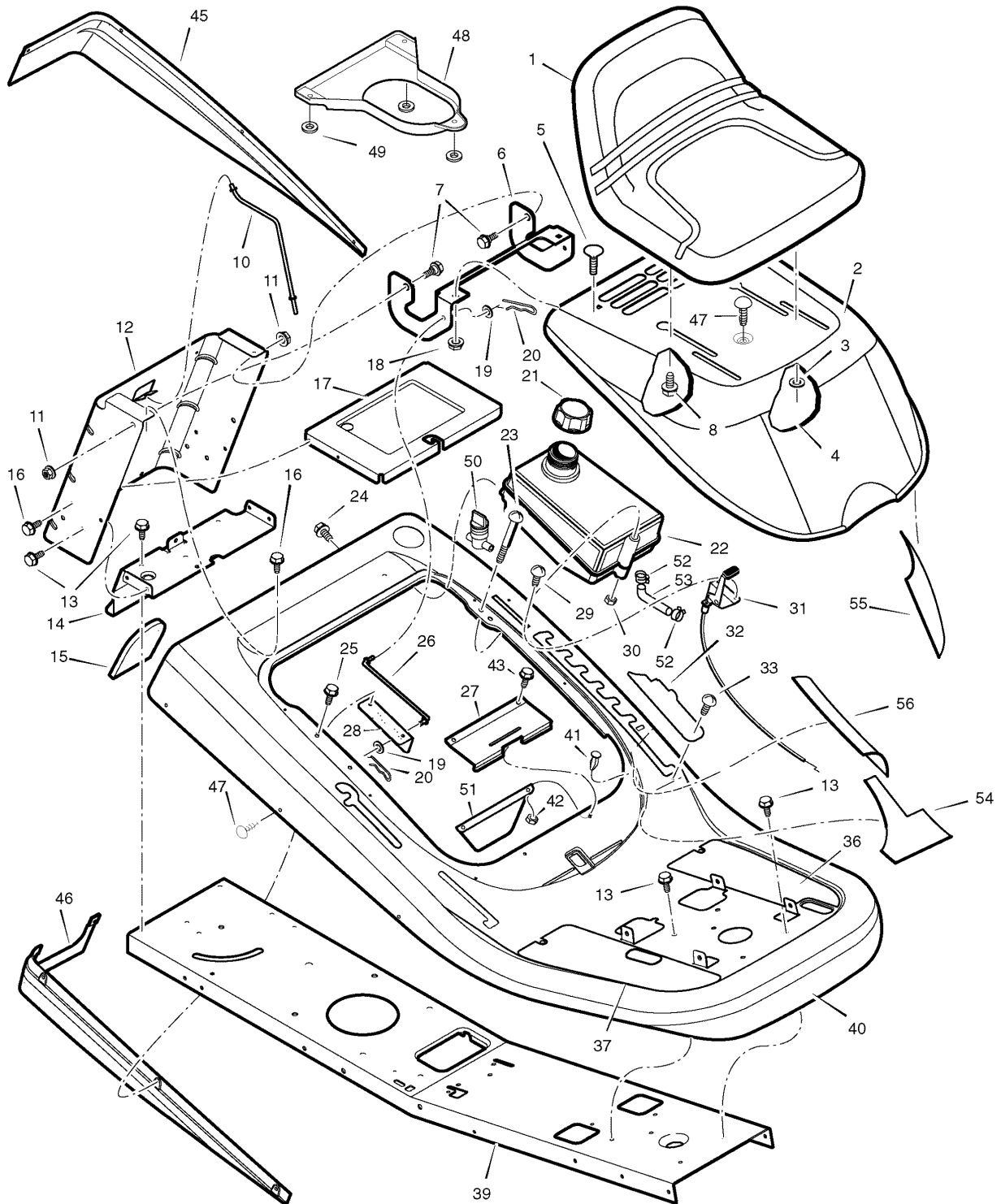
PART NO: 111-2202 (Rev A)

| PRODUCT COMPONENTS | PAGES |
|---|--------------------------|
| Chassis & Hood | 4 |
| Steering | 8 |
| Motion Drive | 10 |
| Mower Housing | 14 |
| Mower Housing Suspension | 18 |
| Decals | 20 |
| Electrical System | 22 |
| Torque Specification Chart | Inside Back Cover |

Chassis & Hood

0003

NOTE: Unless noted otherwise,
use the standard hardware torque
specification chart.



The above parts group applies to the following Mfg. Nos.:
309029x11F - 10/30

Chassis & Hood

| REF NO | PART NO. | DESCRIPTION |
|--------|-----------------|--|
| 1 | MU690566MA | SEAT |
| 2 | MU1401379E549MA | HOOD |
| 3 | MU017X47MA | WASHER |
| 4 | MU1001054MA | BOLT, Wing |
| 5 | MU002X16MA | BOLT, Carriage |
| 6 | MU1401378E701MA | BRACKET, Hinge |
| 7 | MU009X29MA | BOLT, Shoulder |
| 8 | MU009X56MA | BOLT, Shoulder |
| 10 | MU1401113MA | ROD, Battery |
| 11 | MU015X84MA | NUT, Flange |
| 12 | MU1401025E701MA | PLATE, Rear |
| 13 | MU26X249MA | SCREW |
| 14 | MU1401050E701MA | PLATE, Hitch |
| 15 | MU1401087MA | COVER |
| 16 | MU26X263MA | SCREW |
| 17 | MU1401076E701MA | TRAY, Battery |
| 18 | MU015X79MA | NUT, Flange |
| 19 | MU017X45MA | WASHER |
| 20 | MU0031X6MA | PIN, Cotter |
| 21 | MU1714020 | CAP, Fuel Tank (Included with Ref. No. 22) |
| 22 | MU1401361MA | TANK, Fuel |
| 23 | MU06X111MA | SCREW (Included with Ref. No. 22) |
| 24 | MU26X253MA | SCREW |
| 25 | MU26X263MA | SCREW |
| 26 | MU1401110MA | ROD, Hood Prop |
| 27 | MU1401282MA | SPRING, Seat Deck |
| 28 | MU1401297E701MA | BRACKET, Prop Rod |
| 29 | MU26X201MA | SCREW |
| 30 | MU15X116MA | NUT, NY-Lock |
| 31 | MU1401248MA | CONTROL, Throttle |
| 32 | MU1401084MA | COVER, Detent (Black) |
| 33 | MU009X47MA | BOLT, Shoulder |
| 36 | MU1401229MA | FOOTMAT, Left (Black) |
| 37 | MU1401228MA | FOOTMAT, Right (Black) |
| 39 | MU1401371E701MA | FRAME |
| 40 | MU1401349E549MA | DECK, Seat |
| 41 | MU094744MA | BUMPER |
| 42 | MU15X116MA | NUT (Included with Ref. No. 22) |
| 43 | MU0025X2MA | SCREW |
| 44 | MU7601036MA | KIT, Foil Heat Shield |
| 45 | MU1401073MA | TRIM, Left |
| 46 | MU1401072MA | TRIM, Right |
| 47 | MU0193X1MA | FASTENER, Panel |

Footnotes

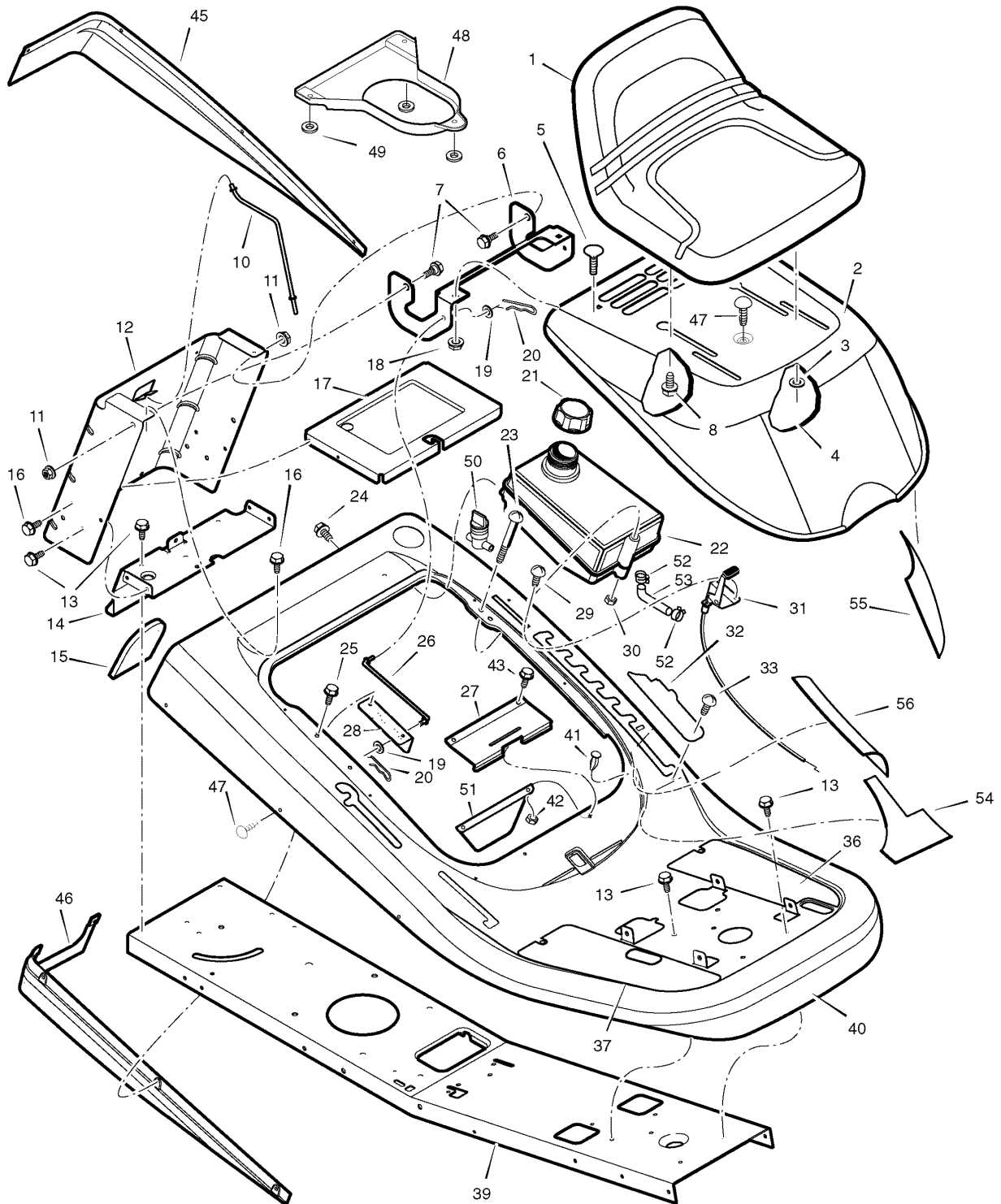
The above parts group applies to the following Mfg. Nos.:

309029x11F - 10/30

Chassis & Hood

0003

NOTE: Unless noted otherwise,
use the standard hardware torque
specification chart.



The above parts group applies to the following Mfg. Nos.:
309029x11F - 10/30

Chassis & Hood

| REF NO | PART NO. | DESCRIPTION |
|---------------|-----------------|-----------------------------------|
| 48 | MU1401380MA | Plenum |
| 49 | MU15X123MA | NUT, Hex 5/16-18 |
| 50 | MU698183 | Valve, Fuel Shutoff |
| 51 | MU1401401MA | SHIELD, Heat |
| 52 | MU095197MA | HOSE, Clamp |
| 53 | MU1401346E701MA | FUEL, Hose |
| 54 | MU1401385MA | HEAT SHIELD, Hood |
| 55 | MU1401208MA | REFLECTOR TAPE, Heat Shield Hood |
| 56 | MU1401209MA | REFLECTOR TAPE, Heat Shield Upper |
| -- | MU1401361 | BAG, Parts |
| -- | 111-2201 | BOOK, Instruction |
| -- | 111-2202 | MANUAL, Parts List |

Footnotes

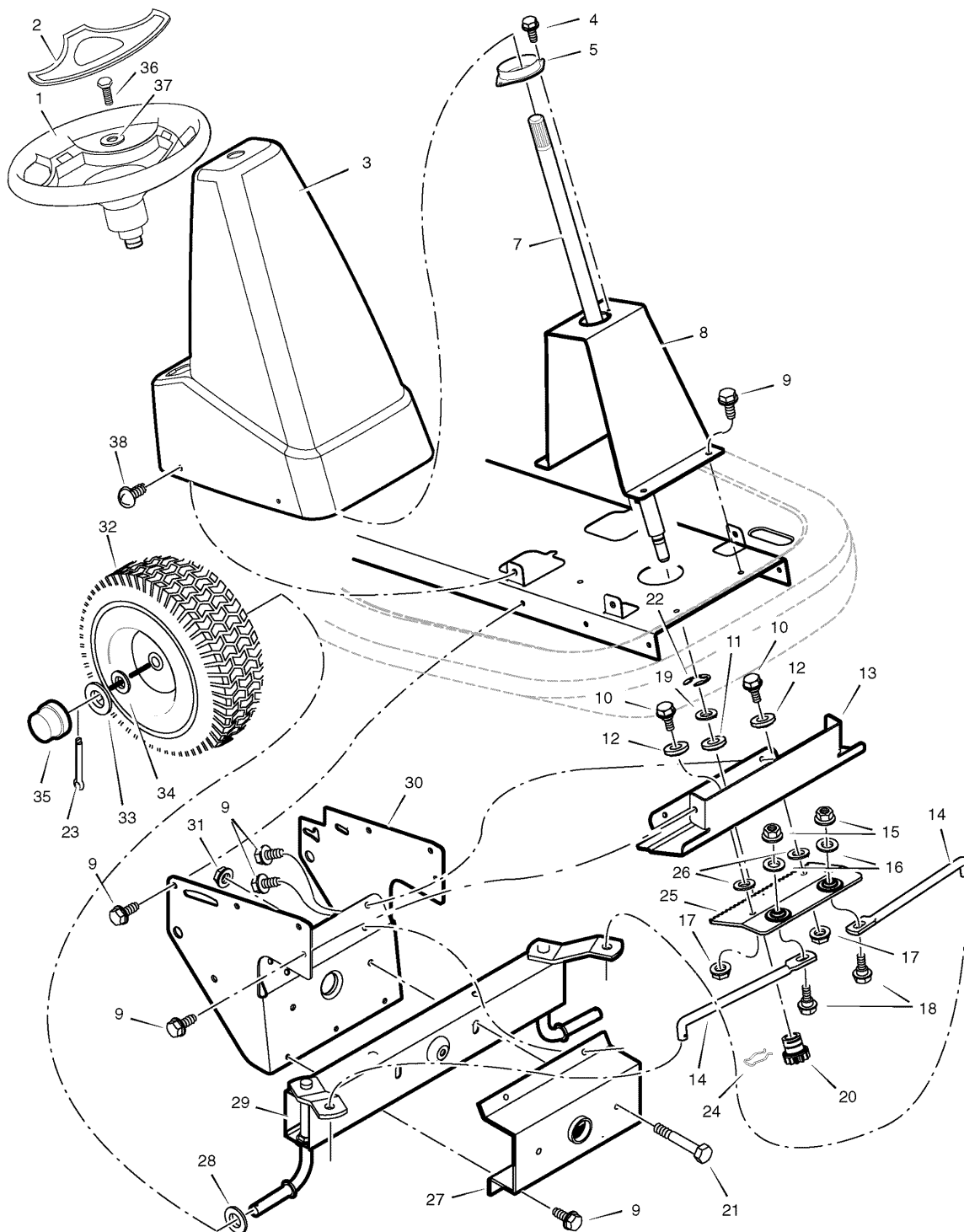
The above parts group applies to the following Mfg. Nos.:

309029x11F - 10/30

Steering

NOTE: Unless noted otherwise, use the standard hardware torque specification chart.

0007



The above parts group applies to the following Mfg. Nos.:
309029x11F - 10/30

Steering

| REF NO | PART NO. | DESCRIPTION |
|--------|-----------------|-------------------------|
| 1 | MU1001980MA | WHEEL, Steering |
| 2 | MU1001982MA | Cap, Steering |
| 3 | MU1401067MA | Console, High -Black |
| 4 | MU26X250MA | SCREW |
| 5 | MU1401090MA | BEARING, Upper Steering |
| 7 | MU1401100MA | Shaft, Steering |
| 8 | MU1401055E701MA | SUPPORT, Steering |
| 9 | MU26X249MA | SCREW |
| 10 | MU009X67MA | BOLT, Shoulder |
| 11 | MU1401098MA | BEARING, Lower Steering |
| 12 | MU1401102MA | Roller |
| 13 | MU1401058E701MA | Plate, Gear Mounting |
| 14 | MU1401123E701MA | Link, Drag |
| 15 | MU015X84MA | NUT, Flange |
| 16 | MU17X104MA | WASHER |
| 17 | MU015X88MA | NUT, Flange |
| 18 | MU01X111MA | BOLT, Hex |
| 19 | MU17X118ZMA | WASHER |
| 20 | MU1401099MA | Gear, Pinion |
| 21 | MU01X146MA | BOLT, Hex |
| 22 | MU011X23MA | E-Ring, Retainer |
| 23 | MU030X35MA | PIN, Cotter |
| 24 | MU094131MA | Retainer, Spring |
| 25 | MU1401046E701MA | Rack, Steering |
| 26 | MU17X201MA | WASHER |
| 27 | MU1401376E701MA | BRACKET, Axle Front |
| 28 | MU17X157MA | WASHER |
| 29 | MU1401250E701MA | Axle & Spindle Assembly |
| 30 | MU1401059E701MA | BRACKET, Support |
| 31 | MU15X118MA | NUT, Flange |
| 32 | MU1401381601MA | WHEEL, Front |
| 33 | MU17X197MA | WASHER |
| 34 | MU17X157MA | WASHER |
| 35 | MU094618MA | Cap, Hub |
| 36 | MU0025X3MA | BOLT |
| 37 | MU17X146MA | WASHER |
| 38 | MU26x270MA | SCREW |

Footnotes

The above parts group applies to the following Mfg. Nos.:

309029x11F - 10/30

Motion Drive

| REF NO | PART NO. | DESCRIPTION |
|--------|-----------------|---|
| 1 | ---- | ENGINE, Briggs & Stratton * (215870135E1) |
| 2 | MU01X134MA | BOLT, Hex |
| 3 | MU1401375MA | SHIELD Assembly, Heat |
| 5 | MU0025X2MA | SCREW |
| 6 | MU1401358MA | MUFFLER |
| 7 | MU692236 | GASKET, Muffler |
| 8 | MU165X75MA | SPRING, Extension |
| 9 | MU165X148MA | SPRING, Extension |
| 10 | MU015X88MA | NUT |
| 11 | MU26X249MA | SCREW |
| 12 | MU1401268E701MA | BRACKET, Left Transaxle |
| 13 | MU015X84MA | NUT, Flange |
| 14 | MU021544MA | COVER, Pedal |
| 15 | MU030X20MA | PIN, Cotter |
| 16 | MU017X53MA | WASHER |
| 17 | MU030X20MA | PIN, Cotter |
| 18 | MU1401127E701MA | PEDAL ASSEMBLY |
| 19 | MU1401112MA | ROD, Parking Brake |
| 20 | MU091079MA | GRIP, Parking Brake Rod |
| 21 | MU1401371E701MA | FRAME |
| 22 | MU092697MA | GRIP, Shift Lever |
| 23 | MU1401148ZMA | NUT, Adjusting |
| 24 | MU1401122MA | LINK, Shift |
| 25 | MU1401111MA | LEVER, Shift |
| 26 | MU1401032E701MA | BRACKET, Lift Pivot |
| 27 | MU165X147MA | SPRING, Extension |
| 28 | MU009X39MA | BOLT, Shoulder |
| 29 | MU1401043E701MA | BRACKET, Pivot |
| 30 | MU1401104MA | GUIDE, Belt -Short |
| 31 | MU1401105MA | GUIDE, Belt -Long |
| 32 | MU1401057E701MA | PLATE, Belt Guide |
| 33 | MU0025X7MA | BOLT |
| 34 | MU015X79MA | NUT, Flange |
| 35 | MU1401059E701MA | BRACKET, Support |
| 36 | MU094815ZMA | NUT, Adjusting |
| 37 | MU1401078MA | ROD, Clutch |
| 38 | MU1401128E701MA | CLUTCH Arm Assembly |
| 39 | MU0011X7MA | RING, Retainer |
| 40 | MU1401077MA | PULLEY, Drive |
| 41 | MU002X53MA | BOLT, Carriage |
| 42 | MU009X39MA | BOLT, Shoulder |
| 43 | MU1401252MA | PULLEY, Idler |
| 44 | MU37X110MA | BELT, Motion Drive |

Footnotes

Note* For information on Replacement Parts contact the manufacturer.

Note** Contact your nearest Peerless transaxle dealer for parts and service.

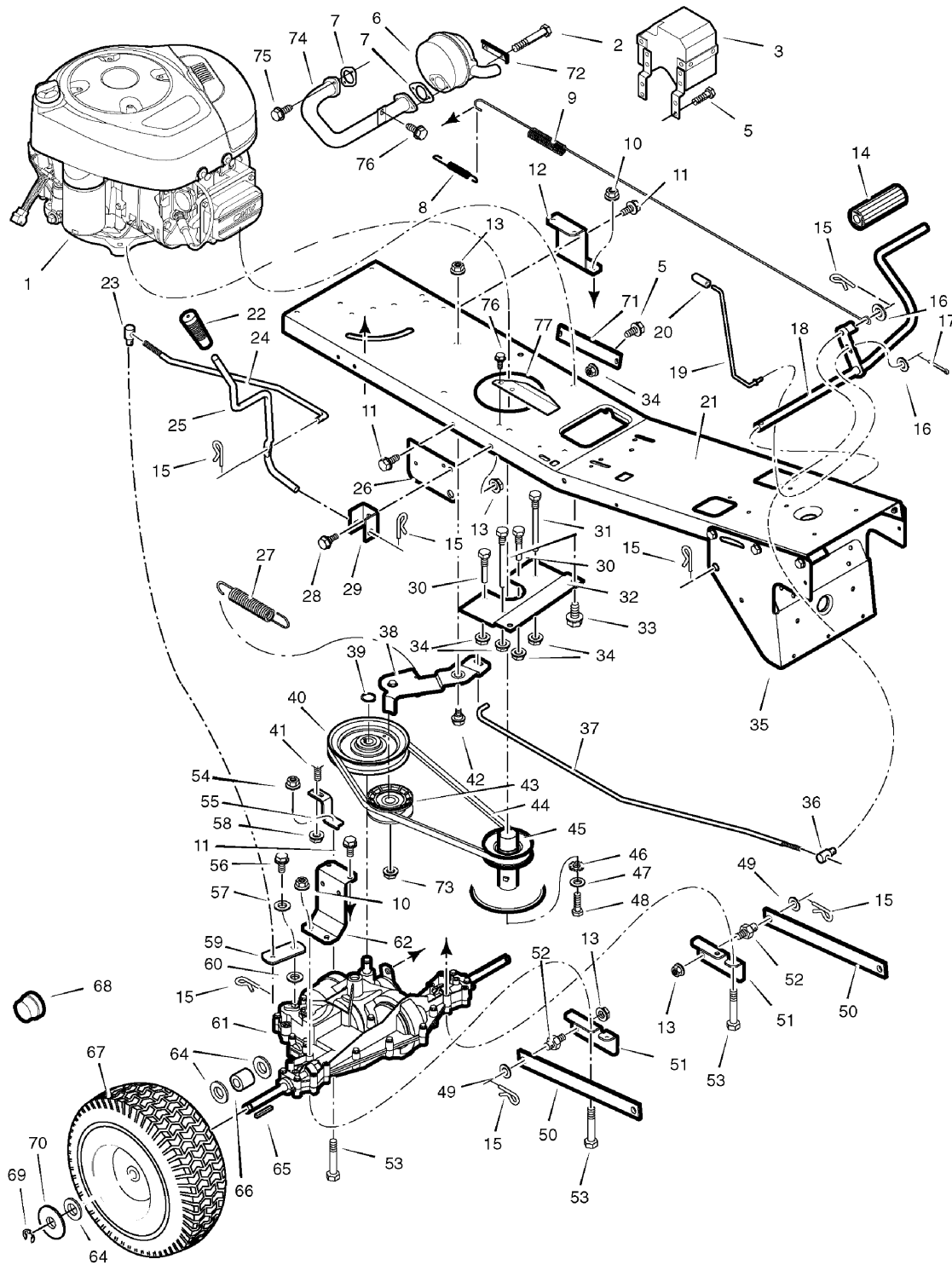
The above parts group applies to the following Mfg. Nos.:

309029x11F - 10/30

Motion Drive

NOTE: Unless noted otherwise,
use the standard hardware torque
specification chart.

0005



The above parts group applies to the following Mfg. Nos.:
309029x11F - 10/30

Motion Drive

| REF NO | PART NO. | DESCRIPTION |
|--------|-----------------|--------------------------|
| 45 | MU1401066MA | PULLEY, Split Stack |
| 46 | MU019X35MA | WASHER, Star |
| 47 | MU17X170MA | WASHER |
| 48 | MU01X140MA | BOLT, Hex |
| 49 | MU017X91MA | WASHER |
| 50 | MU1401031E701MA | ARM, Rear |
| 51 | MU1401039E701MA | BRACKET, Rear Hanger |
| 52 | MU094067MA | PIN, Threaded Shoulder |
| 53 | MU01X155MA | BOLT, Hex |
| 54 | MU01X120MA | BOLT |
| 55 | MU1401051E701MA | BRACKET, Torque Reactor |
| 56 | MU06X105MA | SCREW |
| 57 | MU017x38MA | WASHER, Shift Yoke |
| 58 | MU015X43MA | NUT |
| 59 | MU1401351ZMA | YOKE, Shift |
| 60 | MU17X148MA | WASHER |
| 61 | ----- | TRANSAXLE, Peerless ** |
| 62 | MU1401042E701MA | BRACKET, Right Transaxle |
| 64 | MU17X160MA | WASHER |
| 65 | MU056534MA | KEY, Square |
| 66 | MU1401103MA | SPACER, Rear Wheel |
| 67 | MU1401120MA | WHEEL, Rear -15" |
| 68 | MU094618MA | CAP, Hub |
| 69 | MU0011X3MA | E-RING |
| 70 | MU17X195MA | WASHER |
| 71 | MU1401260E701MA | PLATE, Reinforcement |
| 72 | MU092378MA | LOCK, Screw |
| 73 | MU015X43MA | NUT |
| 74 | MU1401357MA | TUBE, Exhaust |
| 75 | MU06x103MA | SCREW |
| 76 | MU26x263MA | SCREW |
| 77 | MU1401396MA | SHIELD, Heat |

Footnotes

Note* For information on Replacement Parts contact the manufacturer.

Note** Contact your nearest Peerless transaxle dealer for parts and service.

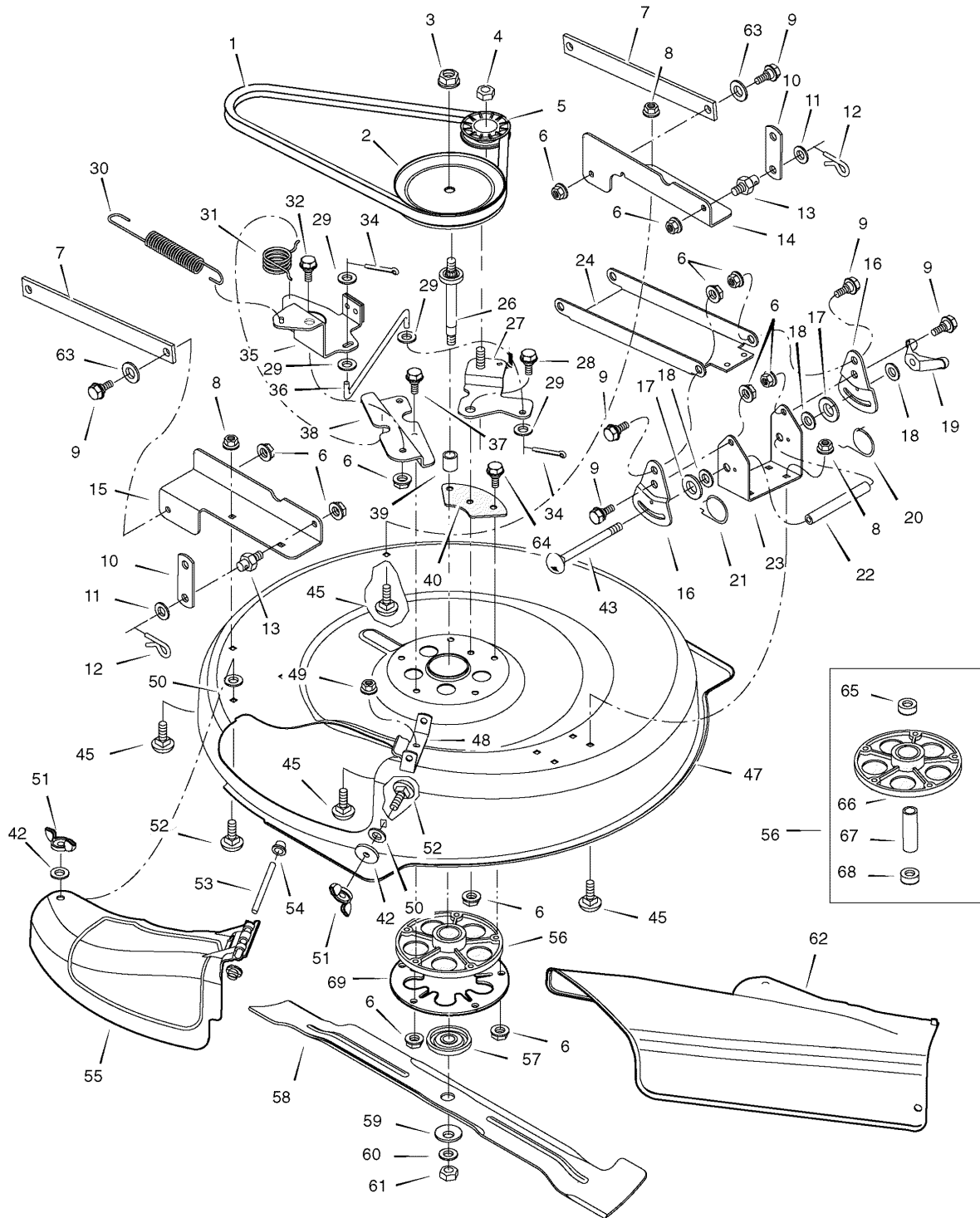
The above parts group applies to the following Mfg. Nos.:

309029x11F - 10/30

Mower Housing

NOTE: Unless noted otherwise, use the standard hardware torque specification chart.

0011



The above parts group applies to the following Mfg. Nos.:
309029x11F - 10/30

Mower Housing

| REF NO | PART NO. | DESCRIPTION |
|--------|-----------------|-------------------------|
| 1 | MU37X111MA | BELT, Blade Drive |
| 2 | MU1401092MA | PULLEY, Input |
| 3 | MU15X140MA | NUT, Lock |
| 4 | MU015X98MA | NUT, Flange |
| 5 | MU1401252MA | PULLEY, Idler |
| 6 | MU015X84MA | NUT, Flange |
| 7 | MU1401031E701MA | ARM, Rear |
| 8 | MU015X79MA | NUT, Flange |
| 9 | MU009X58MA | BOLT, Shoulder |
| 10 | MU1401033E701MA | LINK, Lift |
| 11 | MU017X91MA | WASHER |
| 12 | MU0031X4MA | PIN, Hair |
| 13 | MU094067MA | PIN, Threaded Shoulder |
| 14 | MU1401047E701MA | BRACKET, Left Rear |
| 15 | MU1401296E701MA | BRACKET, Right Rear |
| 16 | MU1401038E701MA | Plate, Adjustment |
| 17 | MU094137MA | PAD, Friction |
| 18 | MU017X45MA | WASHER |
| 19 | MU095004MA | Wingnut |
| 20 | MU166X43MA | SPRING, Left Torsion |
| 21 | MU166X42MA | SPRING, Right Torsion |
| 22 | MU1401095MA | TUBE, Spacer |
| 23 | MU1401037E701MA | BRACKET, Deck |
| 24 | MU1401040E701MA | HANGER, Front |
| 26 | MU1401065MA | SHAFT, Splined |
| 27 | MU1401258E701MA | IDLER ARM, Assembly |
| 28 | MU009X39MA | BOLT, Shoulder |
| 29 | MU017X47MA | WASHER |
| 30 | MU165X157MA | SPRING, Extension |
| 31 | MU166X46MA | SPRING, Torsion |
| 32 | MU009X42MA | BOLT, Shoulder |
| 34 | MU030X20MA | PIN, Cotter |
| 35 | MU1401185E701MA | BRAKE, Arm, Assembly |
| 36 | MU1401119MA | LINK, Idler Arm |
| 37 | MU0025X7MA | BOLT |
| 38 | MU1401052E701MA | BRACKET, Brake Mounting |
| 39 | MU1401094MA | SPACER, Jackshaft |
| 40 | MU1401259ZMA | PLATE, Idler Mounting |
| 42 | MU019X45MA | WASHER |
| 43 | MU002X94MA | BOLT, Carriage |
| 45 | MU002X53MA | BOLT, Carriage |
| 47 | MU1401028E701MA | HOUSING, Blade |
| 48 | MU1401106E701MA | HINGE, Mulching Cover |

Footnotes

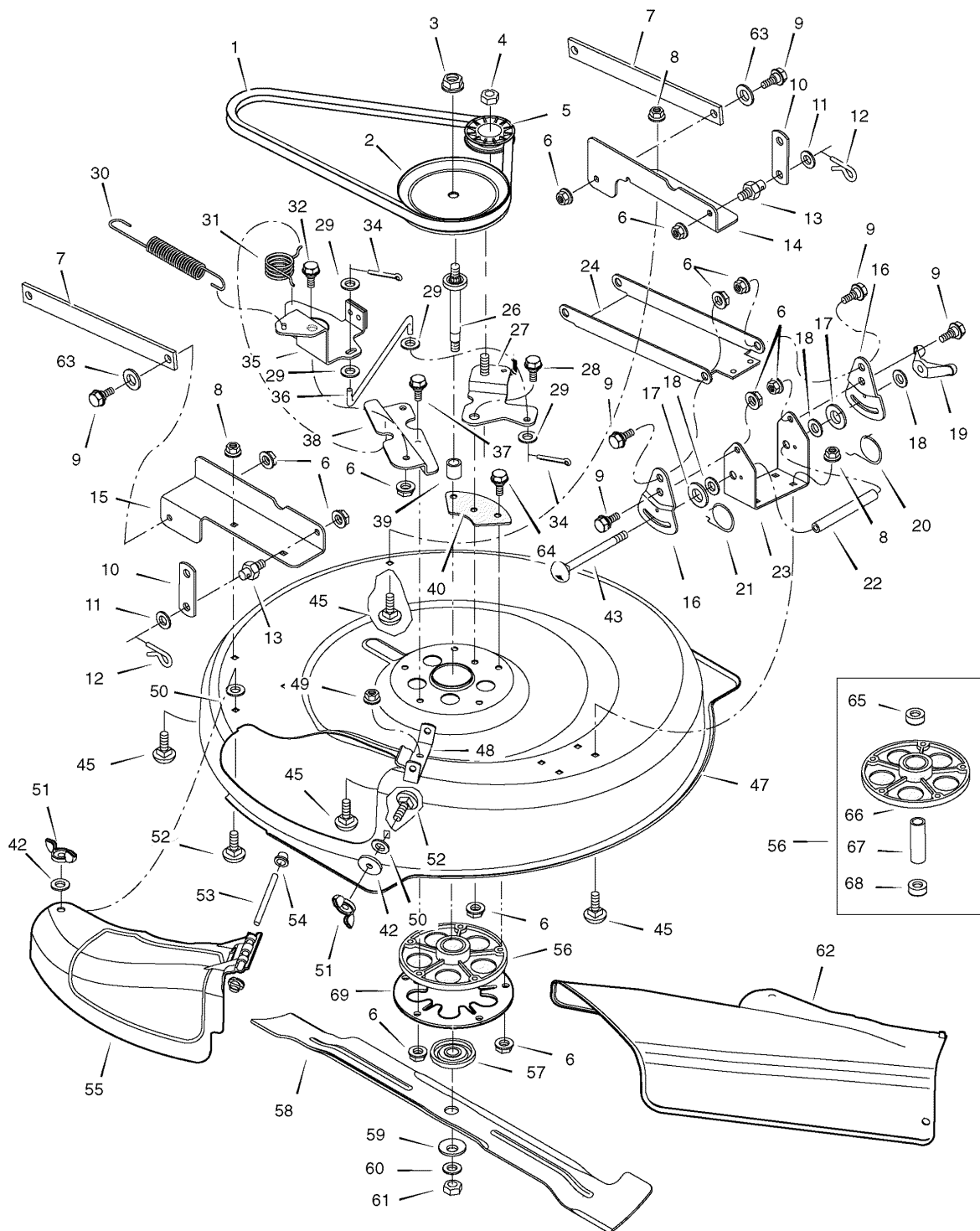
The above parts group applies to the following Mfg. Nos.:

309029x11F - 10/30

Mower Housing

NOTE: Unless noted otherwise, use the standard hardware torque specification chart.

0011



The above parts group applies to the following Mfg. Nos.:
309029x11F - 10/30

Mower Housing

| REF NO | PART NO. | DESCRIPTION |
|---------------|-----------------|--------------------------|
| 49 | MU015X88MA | NUT, Flange |
| 50 | MU028X76MA | NUT, Speed |
| 51 | MU014X86MA | NUT, Wing |
| 52 | MU002X74MA | BOLT, Carriage |
| 53 | MU091767ZMA | ROD, Chute Deflector |
| 54 | MU028X23MA | CAP, Push |
| 55 | MU1401080MA | COVER, Mulch |
| 56 | MU094305MA | MANDREL, Housing |
| 57 | MU1001035MA | ADAPTER, Blade |
| 58 | MU1401079E701MA | BLADE |
| 59 | MU17X166MA | WASHER, Cup |
| 60 | MU17X165MA | WASHER |
| 61 | MU15X100MA | NUT, Blade Mount |
| 62 | MU1401081MA | DEFLECTOR, Chute |
| 63 | MU17X120MA | WASHER |
| 64 | MU025X23MA | BOLT |
| 65 | MU092281MA | BEARING, Upper Jackshaft |
| 66 | MU94282MA | JACKSHAFT, Housing |
| 67 | MU090904MA | BEARING, Spacer |
| 68 | MU092282MA | BEARING, Lower Jackshaft |
| 69 | MU1001952E701MA | PLATE, Jackshaft Support |

Footnotes

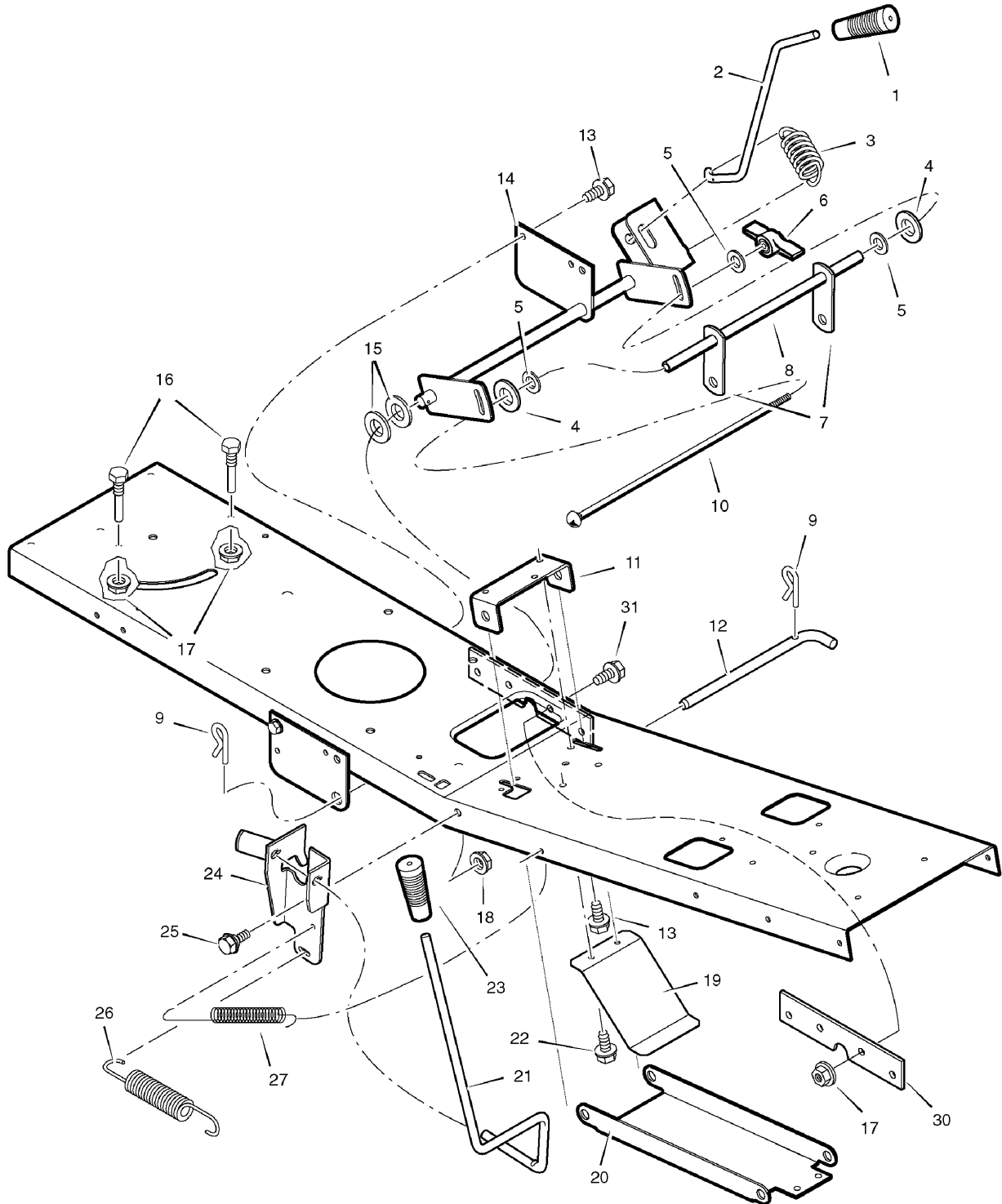
The above parts group applies to the following Mfg. Nos.:

309029x11F - 10/30

Mower Housing Suspension

NOTE: Unless noted otherwise,
use the standard hardware torque
specification chart.

0009



The above parts group applies to the following Mfg. Nos.:
309029x11F - 10/30

Mower Housing Suspension

| REF NO | PART NO. | DESCRIPTION |
|--------|-----------------|-----------------------------|
| 1 | MU092697MA | GRIP, Lift Lever |
| 2 | MU1401117MA | LEVER, Lift |
| 3 | MU165X154MA | SPRING, Extension |
| 4 | MU094137MA | PAD, Friction |
| 5 | MU017X45MA | WASHER |
| 6 | MU095004MA | NUT, Wing |
| 7 | MU1401033E701MA | Link, Lift |
| 8 | MU1401096MA | Tube, Spacer |
| 9 | MU0031X4MA | PIN, Hair |
| 10 | MU002X93MA | BOLT, Carriage |
| 11 | MU1401030E701MA | BRACKET, Front Hanger Pivot |
| 12 | MU1401118MA | PIN, Front Hanger |
| 13 | MU26X249MA | SCREW |
| 14 | MU1401129E701MA | Arm Assembly, Lifter |
| 15 | MU17X206MA | WASHER |
| 16 | MU093349MA | SCREW, Guide |
| 17 | MU015X79MA | NUT, Flange |
| 18 | MU015X84MA | NUT, Flange |
| 19 | MU1401147MA | SPRING, Leaf |
| 20 | MU1401040E701MA | HANGER, Front |
| 21 | MU1401116MA | LEVER, PTO |
| 22 | MU26X263MA | SCREW |
| 23 | MU094198MA | GRIP, PTO |
| 24 | MU1401369E701MA | BRACKET, PTO |
| 25 | MU009X42MA | BOLT, Shoulder |
| 26 | MU165X157MA | SPRING, Extension |
| 27 | MU165X92MA | SPRING, Extension |
| 30 | MU1401260E701MA | Plate, Reinforcement |
| 31 | MU26X267MA | SCREW |

Footnotes

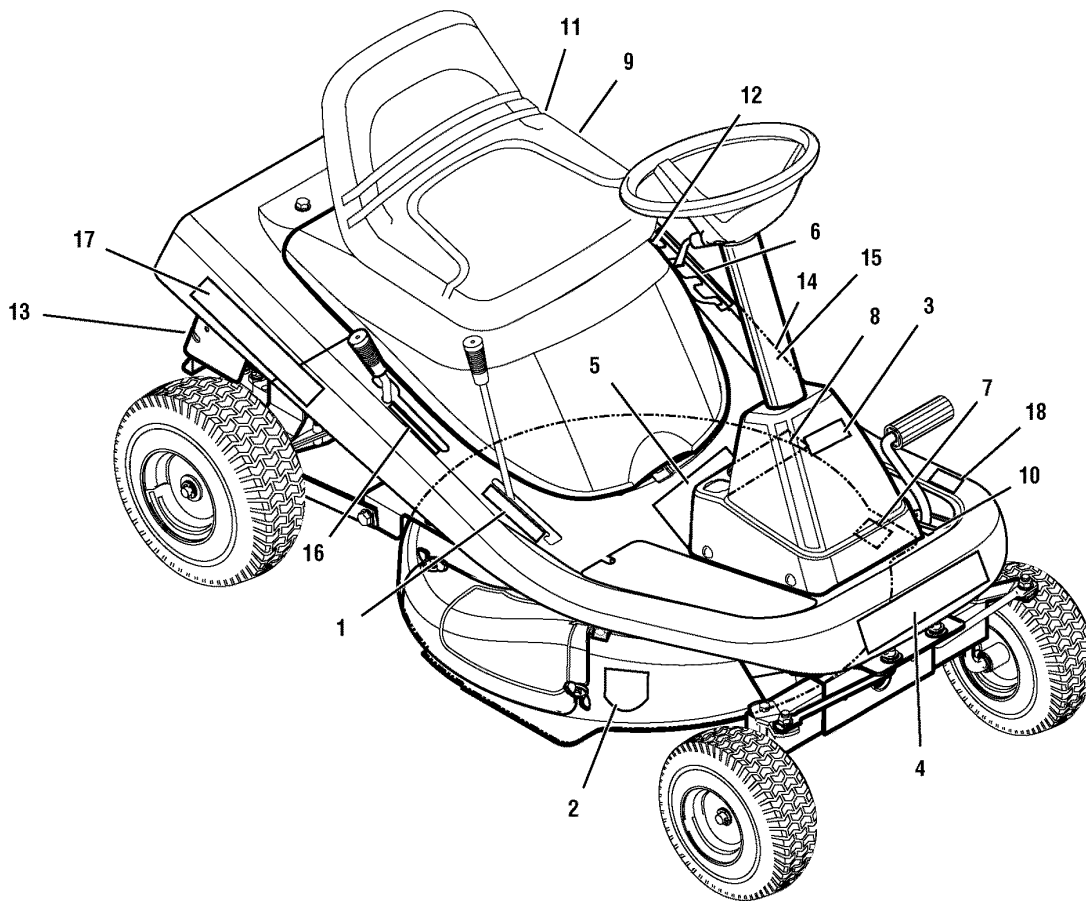
The above parts group applies to the following Mfg. Nos.:

309029x11F - 10/30

Decals

NOTE: Unless noted otherwise,
use the standard hardware torque
specification chart.

0015



The above parts group applies to the following Mfg. Nos.:

309029x11F - 10/30

Decals

| REF NO | PART NO. | DESCRIPTION |
|--------|-------------|-----------------------------------|
| 1 | MU48X724MA | DECAL, Engagement |
| 2 | MU48X4033MA | DECAL, Cut Finger Symbols |
| 3 | MU1740531MA | DECAL, Hayter Emblem |
| 4 | MU1740533MA | DECAL, M10/30 |
| 5 | MU48X4032MA | DECAL, Warning, Export |
| 6 | MU48X727MA | DECAL, Height Adjust, 6 Positions |
| 7 | MU48X4034MA | DECAL, No Step, Export |
| 8 | MU48X726MA | DECAL, Park Brake Symbol |
| 9 | MU48X728MA | DECAL, Throttle Control |
| 10 | MU48X736MA | DECAL, Clutch/Brake XPT |
| 11 | MU48X729MA | DECAL, Gas Gauge |
| 12 | MU44X5936MA | DECAL, Heat Shield Warning |
| 13 | MU48X511MA | DECAL, Warning Load Limit, Export |
| 14 | MU44X6828MA | DECAL, Warning Pinch Point |
| 15 | MU44X7027MA | DECAL, Deck Level |
| 16 | MU48X5223MA | DECAL, Gear Select, 5 Speed |
| 17 | MU1740532MA | DECAL, Hayter Heritage |

Footnotes

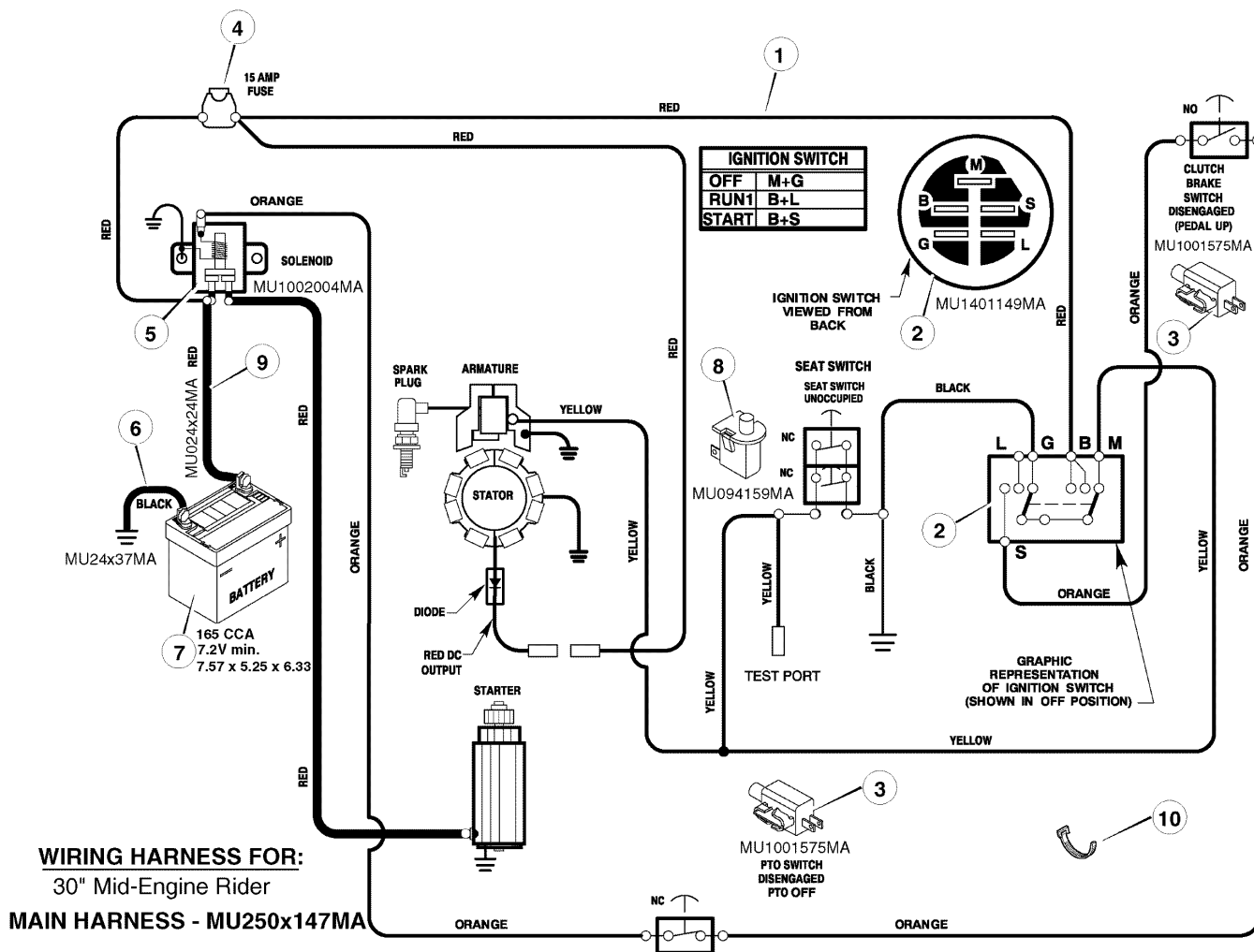
The above parts group applies to the following Mfg. Nos.:

309029x11F - 10/30

Electrical System

0013

NOTE: Unless noted otherwise, use the standard hardware torque specification chart.



The above parts group applies to the following Mfg. Nos.:
309029x11F - 10/30

Electrical System

| REF NO | PART NO. | DESCRIPTION |
|---------------|-----------------|--|
| 1 | MU250X147MA | Harness, Chassis Wire |
| 2 | MU1401149MA | Switch, Ignition |
| -- | MU327349MA | Key, Ignition |
| 3 | MU1001575MA | Switch, Limit |
| 4 | MU054212MA | Fuse |
| -- | MU407078MA | Holder, Fuse |
| 5 | MU1002004MA | Solenoid |
| -- | MU26X229MA | SCREW, Mounting |
| -- | MU15X116MA | Locknut |
| 6 | MU24X37MA | CABLE, Battery Ground |
| 7 | ----- | Battery 165 CCA 7.2V min. 7.57 x 5.25 x 6.33 |
| -- | MU002X82MA | BOLT, Carriage |
| -- | MU014X79MA | Wingnut |
| 8 | MU094159MA | Switch, Seat Sensor |
| 9 | MU024X24MA | CABLE, Red Battery |
| -- | MU690604MA | Boot, Positive Terminal |
| 10 | MU032618MA | Strap, Tie |

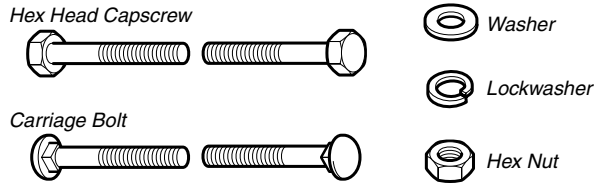
Footnotes

The above parts group applies to the following Mfg. Nos.:

309029x11F - 10/30

Hardware Identification & Torque Specifications

Common Hardware Types

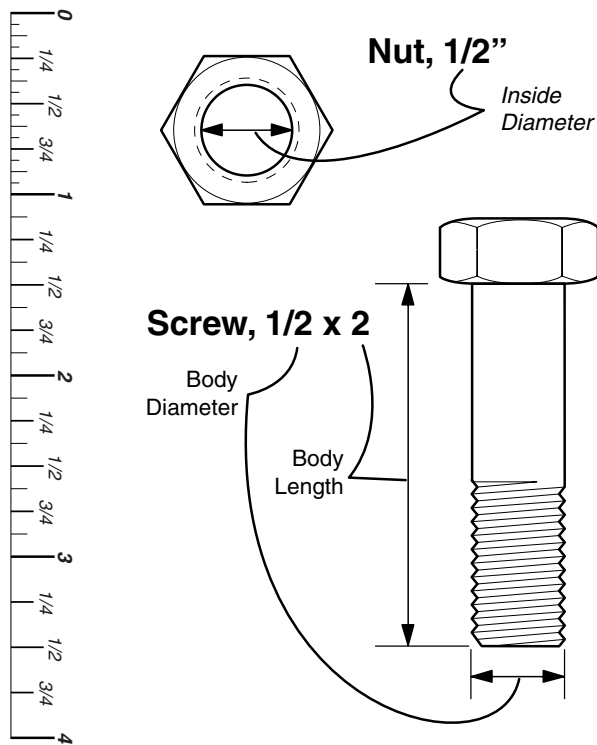


Standard Hardware Sizing

When a washer or nut is identified as 1/2", this is the *Nominal size*, meaning the *inside diameter* is 1/2 inch; if a second number is present it represents the *threads per inch*

When bolt or capscrew is identified as 1/2 - 16 x 2", this means the *Nominal size*, or *body diameter* is 1/2 inch; the second number represents the *threads per inch* (16 in this example, and the final number is the *body length* of the bolt or screw (in this example 2 inches long).

The guides and ruler furnished below are designed to help you select the appropriate hardware and tools.



| Torque Specification Chart | | | | | | |
|---|-------------------------|-------|------------------|-------|------------------|---------|
| FOR STANDARD MACHINE HARDWARE (Tolerance ± 20%) | | | | | | |
| Hardware Grade | No Marks SAE Grade 2 | | SAE Grade 5 | | SAE Grade 8 | |
| | in/lbs ft/lbs | Nm. | in/lbs ft/lbs | Nm. | in/lbs ft/lbs | Nm. |
| 8-32 | 19 | 2.1 | 30 | 3.4 | 41 | 4.6 |
| 8-36 | 20 | 2.3 | 31 | 3.5 | 43 | 4.9 |
| 10-24 | 27 | 3.1 | 43 | 4.9 | 60 | 6.8 |
| 10-32 | 31 | 3.5 | 49 | 5.5 | 68 | 7.7 |
| 1/4-20 | 66 | 7.6 | 8 | 10.9 | 12 | 16.3 |
| 1/4-28 | 76 | 8.6 | 10 | 13.6 | 14 | 19.0 |
| 5/16-18 | 11 | 15.0 | 17 | 23.1 | 25 | 34.0 |
| 5/16-24 | 12 | 16.3 | 19 | 25.8 | 27 | 34.0 |
| 3/8-16 | 20 | 27.2 | 30 | 40.8 | 45 | 61.2 |
| 3/8-24 | 23 | 31.3 | 35 | 47.6 | 50 | 68.0 |
| 7/16-14 | 30 | 40.8 | 50 | 68.0 | 70 | 95.2 |
| 7/16-20 | 35 | 47.6 | 55 | 74.8 | 80 | 108.8 |
| 1/2-13 | 50 | 68.0 | 75 | 102.0 | 110 | 149.6 |
| 1/2-20 | 55 | 74.8 | 90 | 122.4 | 120 | 163.2 |
| 9/16-12 | 65 | 88.4 | 110 | 149.6 | 150 | 204.0 |
| 9/16-18 | 75 | 102.0 | 120 | 163.2 | 170 | 231.2 |
| 5/8-11 | 90 | 122.4 | 150 | 204.0 | 220 | 299.2 |
| 5/8-18 | 100 | 136 | 180 | 244.8 | 240 | 326.4 |
| 3/4-10 | 160 | 217.6 | 260 | 353.6 | 386 | 525.0 |
| 3/4-16 | 180 | 244.8 | 300 | 408.0 | 420 | 571.2 |
| 7/8-9 | 140 | 190.4 | 400 | 544.0 | 600 | 816.0 |
| 7/8-14 | 155 | 210.8 | 440 | 598.4 | 660 | 897.6 |
| 1-8 | 220 | 299.2 | 580 | 788.8 | 900 | 1,244.0 |
| 1-12 | 240 | 326.4 | 640 | 870.4 | 1,000 | 1,360.0 |

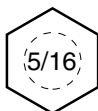
NOTES

- These torque values are to be used for all hardware excluding: locknuts, self-tapping screws, thread forming screws, sheet metal screws and socket head setscrews.
- Recommended seating torque values for locknuts:
 - for prevailing torque locknuts - use 65% of grade 5 torques.
 - for flange whizlock nuts and screws - use 135% of grade 5 torques.
- Unless otherwise noted on assembly drawings, all torque values must meet this specification.

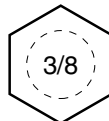
Wrench & Fastener Size Guide



1/4" Bolt or Nut
Wrench—7/16"



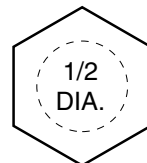
5/16" Bolt or Nut
Wrench—1/2"



3/8" Bolt or Nut
Wrench—9/16"



7/16" Bolt or Nut
Wrench (Bolt)—5/8"
Wrench (Nut)—11/16"



1/2" Bolt or Nut
Wrench—3/4"

