

Material No:	<u>111-8390</u>	Rev:	A	Release/Change Authorization Number:	5101128	C O N F I D E N T I A L
Description:	MANUAL-OPERATOR SCARIFIER [110:EN]			Issue Date :	12/3/2015	
HAYTER Technical Publications Assembly				Supersedes:		
				Created By :	LH	
				Scale :	None	
<small>THIS UNPUBLISHED DOCUMENT CONTAINS HAYTER CONFIDENTIAL AND PROPRIETARY INFORMATION. IT MAY NOT BE WHOLLY OR PARTIALLY COPIED, DISCLOSED TO OTHERS, OR USED FOR ANY PURPOSE WITHOUT WRITTEN PERMISSION FROM HAYTER. IF PUBLICATION OCCURS, THE FOLLOWING NOTICE APPLIES: "HAYTER ALL RIGHTS RESERVED".</small>						
Reason for Revision:	ECM 5101128 RELEASE TO PRODUCTION					

Comments

COVER PAGE FOR MANUAL-OPERATOR SCARIFIER [110:EN]



HAYTER
MAKERS OF THE FINEST MOWERS

Scarifier
Code 110J

OWNER'S HANDBOOK



Original Version (EN)
Issued: 12/03/2015

From Serial Number: 31500001 Onwards
Part number: 111-8390 Rev A

CONTENTS

Introduction	3	Slopes	9
Main Features	4	Knife Blade Adjustment	9
Specifications	4	Before Scarifying	9
Noise and Vibration Information	4	Collector Bag	9
Safety Precautions	5 - 6	Without Collector Bag Collection	9
Safety Alert Symbol	5	Non Grassed Areas	9
Training	5	Maintenance Schedule	10
Preparation	5	Engine Detail	10
Safety Symbols	5 - 6	Scarifier Maintenance	10 - 11
Operation	5 - 6	Carburettor Adjustments	10
Maintenance & Storage	6	Oil Service	10
Control Symbols	6	Knife Blade Replacement	11
Assembling the Scarifier Before First Use	7	High Capacity Air Cleaner Service	11
Delivery Checklist	7	Spark Plug Service	11
Handlebar Assembly	7	Keeping Engine Clean	12
Collector Bag Assembly	7	Collector Bag	12
Collector Bag Attachment	7	Deck Housing	12
Prevent Engine Damage	7	Securing Nuts and Bolts	12
Oil Type	7	Lubrication	12
Check Oil Level	7	Storage	12
Fuel Type	7	Trouble Shooting	13
Operating the Scarifier	8 - 10	Warranty	13
Controls	8	EU Privacy Statement	14
Starting	8	Notes	15
Forward Travel	8	Customer Information	16
Reverse Travel	8		
Turning	8		
Stopping	8		

INTRODUCTION

Thank you for purchasing a Hayter Scarifier. The following pages are designed to help you gain safe and efficient service from your machine.

IMPORTANT: This 'Owners Handbook' should be regarded as part of the machine as it gives essential information regarding machine safety, operation, maintenance and specifications. Read and understand this handbook prior to operating your Scarifier for the first time. Make sure you are familiar with all the controls and points of regular maintenance. If you have any doubts, consult your local Hayter authorised dealer who will be pleased to give you assistance.

IMPORTANT: This Scarifier is designed solely for use in a domestic scarifying environment. Use in any other way is considered as contrary to the intended use. Compliance with and strict adherence to the conditions of operation, service and repair as specified in this handbook also constitute essential elements of the intended use.

This Scarifier should be operated, serviced and repaired only by persons who are familiar with its particular characteristics and who are acquainted with the relevant safety procedures.

The safety precautions listed in this handbook and all other generally recognised regulations on safety must be observed at all times.

Use of non standard parts or any arbitrary modifications carried out on this machine may relieve Hayter Limited of liability for any resulting damage or injury.

Hayter Scarifiers are robustly constructed and designed for efficient economical performance under normal scarifying conditions. Correct operation and maintenance will ensure a long and satisfactory service life. Prior to dispatch from our factory every effort is made to ensure that your Scarifier is delivered in perfect condition.

Throughout this handbook all references to **left** and **right** are as viewed from behind the handlebar, in the direction of forward travel.

This handbook is based on information available at the time of publication.

HAYTER LIMITED reserve the right to amend product specifications without prior notification.

SAFETY COMPLIANCE

Code	110
Weight	33 kg
Length	1220 mm
Width	590 mm
Height	1130 mm
Width of Cut	360 mm
Depth of Cut (6 positions)	0 - 20 mm
Power	2.3 kW
Knife blade Speed	3150 rpm
Catcher Capacity	40 litre

Noise and Vibration Information

Guaranteed Sound Power = 93 dB(A)

Measured Sound Power = 92 dB(A)

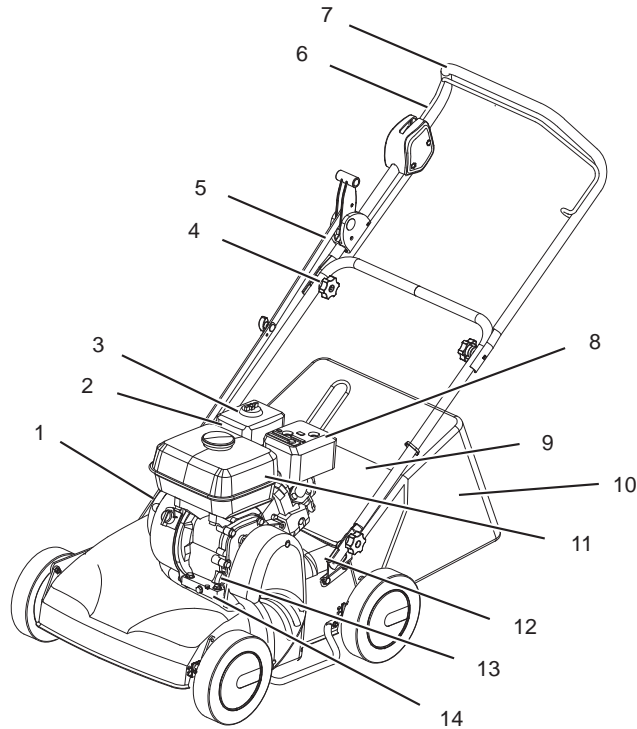
Sound Pressure at Operator Ear = 81 dB(A)

Vibration (at handle) = 5.5 ms²

For a full range of products and to locate your nearest authorised sales stockist, service or parts dealer please visit our website at www.hayter.co.uk

MAIN FEATURES

SPECIFICATIONS



- | | |
|------------------------------------|-------------------------------------|
| 1. Engine Start Grip (Not shown) | 8. Exhaust Guard |
| 2. Air Filter | 9. Rear Deflector |
| 3. Spark Plug | 10. Collector Assembly |
| 4. Handlebar Securing Knob | 11. Fuel Tank |
| 5. Blade Depth Adjuster Rope Guide | 12. Serial Number Label (Not shown) |
| 6. Engine Stop Lever | 13. Oil Filler Cap and Dipstick |
| 7. Handlebar | 14. Oil Drain Plug |

Code	110
Weight	33 kg
Length	1220 mm
Width	590 mm
Height	1130 mm
Width of Cut	360 mm
Depth of Cut (6 positions)	0 - 20 mm
Power	2.3 kW
Knife blade Speed	3150 rpm
Catcher Capacity	40 litre

Noise and Vibration Information

Guaranteed Sound Power = 93 dB(A)

Measured Sound Power = 92 dB(A)

Sound Pressure at Operator Ear = 81 dB(A)

Vibration (at handle) = 5.5 ms²

SAFETY SYMBOLS

Safety Alert Symbol

This safety alert symbol indicates important safety messages. When you see this symbol be alert to the possibility of injury. Carefully read the following and inform others.

Your Scarifier is perfectly safe if used correctly. Failure to observe the following precautions may result in serious injury.

Training

Before using the Scarifier read the owners handbook carefully. Pay particular attention to the safety precautions. Ensure that you are familiar with the controls and the proper use of the equipment.

Never allow children or people unfamiliar with these instructions to use the Scarifier. Local regulations can restrict the age of the operator.

Never scarify while people, especially children, or pets are nearby.

Keep in mind that the user is responsible for accidents or hazards occurring to other people or their property.

Preparation

While scarifying, always wear substantial footwear and long trousers. Do not operate the equipment when barefoot or wearing sandals.

Thoroughly inspect the area where the Scarifier is to be used and remove all objects which may be thrown by the machine.

WARNING: Petrol is highly flammable:

- Store fuel in containers specifically designed for this purpose
- Refuel outdoors only and do not smoke while refuelling;
- Add fuel before starting the engine. Never remove the cap from the fuel tank or add petrol while the engine is running or when the engine is hot;
- If petrol is spilled, do not attempt to start the engine, move the machine away from the area of spillage and avoid creating any source of ignition until the petrol vapours have dissipated;
- Replace all fuel tank and container caps securely;
- Always use fresh fuel which contains 10% or less ethanol. Stale fuel can block the carburettor and cause leakage. High levels of ethanol can cause engine damage.

Replace faulty exhaust.

Replace faulty silencers.

A damaged knife blade or loose fixing bolt are major hazards. Before use, always visually inspect the cutting mechanism to ensure that it is in good condition. A damaged knife blade must be replaced immediately with a genuine Hayter replacement part.

Operation

Before using the Scarifier, cut the grass to a height of 25 mm.

Do not operate the engine in confined spaces where exhaust fumes (carbon monoxide) can collect.

Always pull the starter cord slowly until resistance is felt. Then pull the cord rapidly to avoid kickback and prevent hand or arm injury.

Scarify only in daylight or good artificial light.

Always be sure of your footing on slopes.

Walk, never run.

Exercise extreme caution when changing direction.

Use extreme caution when reversing or pulling the Scarifier towards you.

Safety Symbols



Safety Alert Be Aware To The Possibility Of Injury



Carefully Read The Owners Handbook Before Using The Machine



Danger Of Severing Toes Or Fingers In Cutting Mechanism



Danger Of Being Hit By Thrown Objects



Do Not Put Hands Or Feet Near Or Under Rotating Parts. Keep Clear Of The Discharge Opening At All Times. The Blades Continue To Rotate After The Unit Is Switched Off.



Keep Bystanders At A Safe Distance From The Scarifier

SAFETY SYMBOLS

Operation cont

Always replace worn or faulty parts with genuine Hayter parts.

This machine contains spring loaded assemblies which could cause a hazard when disassembled and re-assembled, this maintenance should only be carried out by a Hayter authorised dealer.

Release the engine stop lever and ensure that the blades have stopped before tilting the Scarifier.

Stop the blades when transporting the machine over ground conditions other than grass.

Never operate the machine with defective guards, or without safety devices in place.

Start the engine carefully, with feet well away from the knife blade.

Do not tilt the Scarifier when starting the engine.

Do not start the engine if standing in front of the discharge chute.

Do not put hands or feet near or under rotating parts.

Never lift the rear deflector, pick up or carry the machine whilst

the engine is running.

Never touch the exhaust, exhaust guard or cooling fins when the engine is hot.

THE KNIFE BLADE CAN CONTINUE TO ROTATE AFTER THE MACHINE IS SWITCHED OFF.

Stop the engine and disconnect the spark plug lead:

- Before clearing blockages or unclogging the discharge chute;
- Before cleaning, checking or working on the machine;
- After striking a foreign object. Inspect the machine for damage and ensure necessary repairs are made before re-starting and operating;
- If the machine starts to vibrate abnormally (check immediately).

Stop the engine:

- Whenever you leave the Scarifier;
- Before refuelling.

Maintenance & Storage

Keep all nuts, bolts and screws tight to ensure that the equipment is in safe operating condition.

Frequently check fuel lines and fittings for cracks or leaks and

replace if necessary.

Check the rear deflector and collector bag frequently for wear or deterioration.

Replace worn or damaged parts for safety.

Inspect the exhaust periodically and replace if worn or leaking.

Never store the Scarifier with petrol in the tank within an enclosed area where fumes may reach an open flame or spark.

Allow the engine to cool before storing in any enclosure.

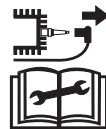
To reduce the fire hazard, keep the engine and the surrounding deck area free of grass, leaves or excessive grease.

If the fuel tank has to be drained, this should be done outdoors and when the engine is cool.

Safety Symbols



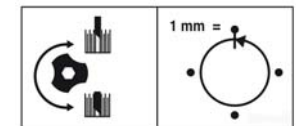
The engine is shipped without oil. DO NOT START until the sump has been filled with oil. DO NOT FILL OVER MAXIMUM LEVEL. Before starting, refer to the attached manufacturers engine manual.



Stop Engine And Remove The Spark Plug Lead Before Working On The Scarifier



Engine Stop



Knife Blade Depth Adjustment

ASSEMBLING THE SCARIFIER BEFORE FIRST USE

Delivery Checklist

Remove the Scarifier from the packaging and check that the following items have been supplied correctly. If any items are missing, contact your local Hayter dealer.

1. Engine Handbook
2. Parts List and DOC
3. Collector Bag
4. Cable Ties x 3
5. Handlebar Securing Screws and Knobs

Handlebar Assembly

- Fit the handles using the screws and knobs provided. Tighten the lower handlebar knobs using a 13 mm spanner. (Refer figs.1 and 2)

Take care to ensure that the power cable does not become snagged at the pivot points. Secure the cables using the ties provided. (Refer fig.3)

Collector Bag Assembly

- Insert the metal frame into the collector bag fabric.
- Clamp the long sides first and then the short sides. (Refer fig.4)

Collector Bag Attachment

Raise the rear deflector, pass the collector bag through the handlebar and hook into position. Lower the rear deflector to rest on the collector bag.

Prevent Engine Damage

To prevent engine damage the engine is shipped without oil or petrol. The engine must be filled with the correct grade of oil and petrol before starting the engine. Please refer to your engine manual for more information.

Oil Type

Always use high quality detergent oil classified SAE 30 oil. Never use additives with recommended oil. To prolong the life of your engine it is important that the oil is changed after the first 5 hours of use.

Check Oil Level

Before adding or checking the oil:

- Place engine level.
- Clean the oil fill area of any debris.
- Remove the dipstick (A) and wipe with a clean cloth.
- Insert the dipstick. Do not turn or tighten.
- Remove dipstick and check oil level. It should be at the top of the full indicator (C) on the dipstick.

- To add oil, pour the oil slowly into the engine oil fill (B). Fill to point of overflowing.
- Replace and tighten the dipstick. (Refer fig.5 and 6)

Fuel Type

Purchase fuel in quantities that can be used in 30 days. Fuel must meet these requirements:

- Clean, fresh, unleaded petrol.
- A minimum of 87 octane / 87 AKI (91 RON).
- Petrol with up to 10% ethanol is acceptable.

CAUTION: Do not use unapproved fuels, such as E15 and E85. Do not mix oil in fuel or modify the engine to run on alternate fuels. Use of unapproved fuels will damage the engine components and void the engine warranty.

To protect the fuel system from gum formation, mix a fuel stabiliser into the fuel. All fuel is not the same. If starting or performance problems occur, change fuel providers or change brands. The engine is certified to operate on petrol.

Adding fuel:

- Turn engine off and let the engine cool for at least 2 minutes before removing the fuel cap.
- Fill the fuel tank outdoors or in a well-ventilated area.
- Do not overfill the fuel tank. To allow for expansion of the fuel, do not fill above the bottom of the fuel tank neck. (Refer fig.7)

Fig. 1

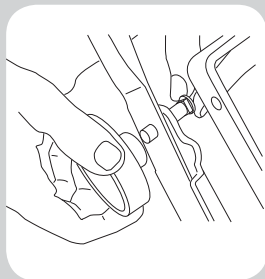


Fig. 2

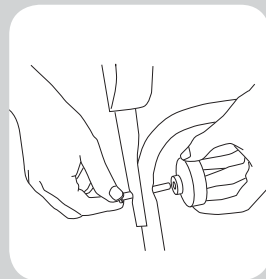


Fig. 3

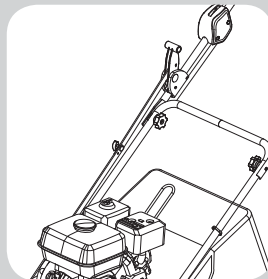
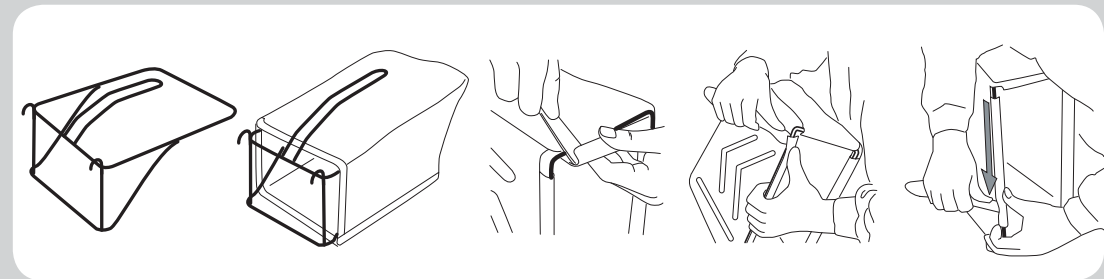


Fig. 4



OPERATING THE SCARIFIER

Controls

Operate all control levers several times and ensure that the cables move freely. Check that the engine stop lever returns freely to its rest position when released.

(Refer fig.8)

Starting

Move the fuel shutoff valve (A) to the 'ON' position.
Move the choke control lever (B) to the 'CHOKE' position.

Note: Choke is usually unnecessary when restarting a warm engine.

Rapid retraction of the starter cord (kickback) will pull your hand and arm toward the engine faster than you can let go. Broken bones, fractures, bruises and sprains could result. When starting the engine, pull the starter cord slowly until resistance is felt and then pull rapidly to avoid kickback.

Note: If the engine does not start after repeated attempts contact your local Briggs & Stratton dealer.

As the engine warms up, move the choke control lever (B) to the 'RUN' position.

(Refer fig.9)

The engine stop lever must be held firmly against the handlebar to start and keep the engine running. If the engine

stop lever is released the engine will stop.

To prevent damage, never pull the engine start grip when the engine is running.

Forward Travel

Walk forwards maintaining a steady speed.

Reverse Travel

Hold and pull against the handlebar with both hands to reverse the Scarifier.

Turning

To make a wide turn, steer the Scarifier with the handlebar in the direction required.

To prevent accidents do not raise the front of the Scarifier excessively when making a turn. Never raise the rear of the Scarifier when the engine is running.

Stopping

Release the engine stop lever.

(Refer fig.10)

Fig. 5

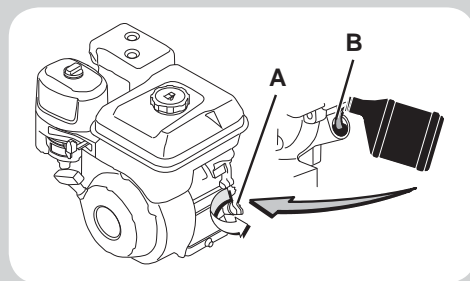


Fig. 6

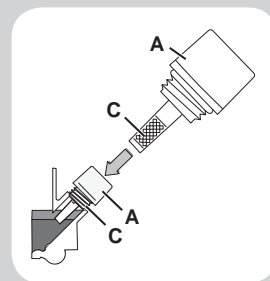


Fig. 7

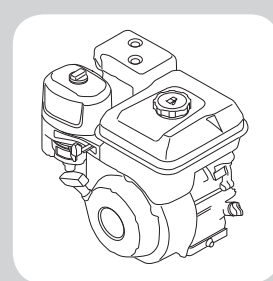


Fig. 8

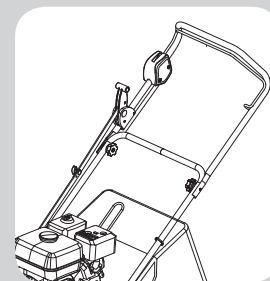


Fig. 9

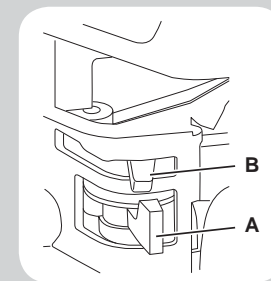
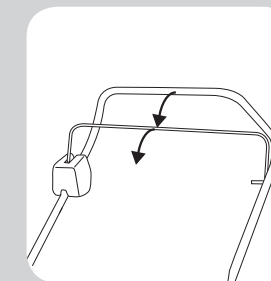


Fig. 10



OPERATING THE SCARIFIER

Slopes

To prevent engine damage, do not use the Scarifier on slopes greater than 20 degrees.
(Refer fig.11)

Knife Blade Adjustment

To lower the knife blades into the working position, push the HOC lever forwards
(Refer fig.12)

To raise the knife blades into the storage position, pull the HOC lever backwards.

To adjust the knife blade depth, rotate the adjustment screw. Rotate the adjustment screw up to lower the knife blade depth, or rotate the adjustment screw down to raise the knife blade depth.
(Refer fig.13)

Before Scarifying

To prevent accidents, thoroughly inspect the area and remove all objects which when contacted by the Scarifier knife blade could become dangerous projectiles. Inspect the area for hidden obstructions which when contacted by the knife blade could risk health and safety or result in damage to the Scarifier. Remember the location of these obstructions

and ensure that you scarify around them.
(Refer fig.14)

Collector Bag

Raise the rear deflector, lift the collector bag through the handlebar and hook into position. Lower the rear deflector to rest against the rear of the Scarifier.

To empty the collector bag, empty the thatch and shake the collector bag vigorously to clean the airways. Good thatch collection depends on good air flow through the collector bag. When collecting thatch it is important that the collector bag is emptied regularly to prevent blockages and engine overloading.
(Refer fig.15)

Without Collector Bag

Remove the collector bag and operate the Scarifier with the rear deflector in the closed position.
(Refer fig.16)

Non Grassed Areas

When moving the Scarifier across non-grassed areas, stop the engine and set the knife blade height to the highest position to protect the cutting mechanism.

Always stop the engine when a hidden obstruction or excessive vibration is encountered. Disconnect the spark

plug lead and examine the cutting mechanism. ALWAYS replace a damaged knife blade. Refer to Maintenance.

Fig. 11

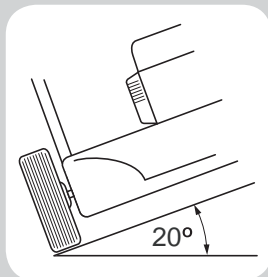


Fig. 12

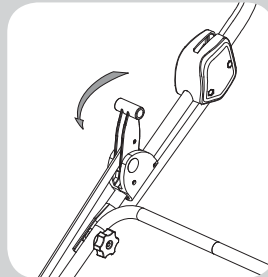


Fig. 13

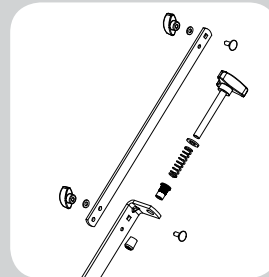


Fig. 14

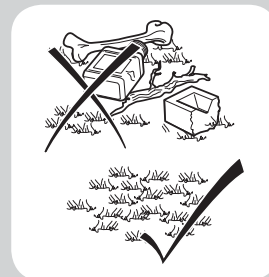


Fig. 15

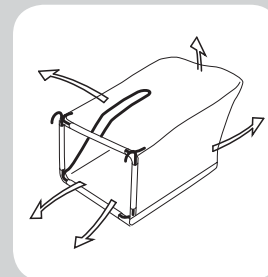
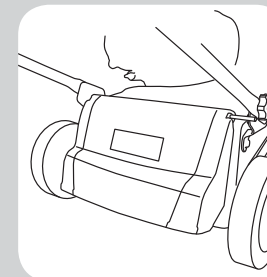


Fig. 16



MAINTENANCE SCHEDULE

Maintenance Schedule

To prevent accidents, stop the engine and disconnect the spark plug lead before attempting to carry out procedures on the Scarifier.

After the very first five hours, change the engine oil.

Follow the hourly or calendar intervals, whichever occurs first. More frequent service will be required if working for prolonged periods under dusty, dry conditions, when airborne debris is present or after extensive operation.

Daily

- Check the oil level.
- Remove thatch debris from around the engine, exhaust, exhaust guard, air ways in the top cowl, underside of the deck housing and from the collector bag and check for signs of damage.
- Check the condition of the guards and safety devices.
- Check the condition of the knife blade.

25 Hours Or Every Season

- Change the engine oil if continuously operating under heavy load or high ambient temperature.
- Service the air cleaner.
- Lubricate wheels, pivot points and linkages and grease the

inner control cables at point of entry and exit from their outer casting.

50 Hours or Every Season

- Change the engine oil.

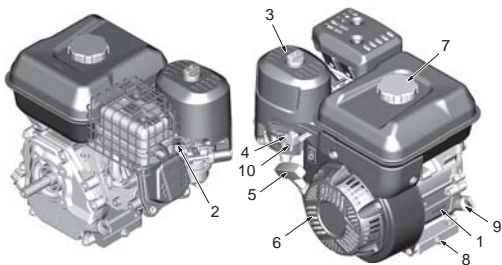
100 Hours or Every Season

- Clean the engine cooling system. Clean more often under dusty conditions, when airborne debris is present or after prolonged operation whilst scarifying.
- Replace the spark plug.

Engine Detail

(Refer fig.17)

Fig. 17



- | | |
|--------------------------|----------------------|
| 1. Engine Identification | 6. Finger Guard |
| 2. Spark Plug | 7. Fuel Tank and Cap |
| 3. Air Cleaner | 8. Oil Drain Plug |
| 4. Choke | 9. Oil Fill |
| 5. Starter Cord Handle | 10. Fuel Shutoff |

SCARIFIER MAINTENANCE

Carburettor Adjustments

Never make adjustments to the carburettor. The carburettor was set at the factory to operate efficiently under most conditions. Do not tamper with the governor spring, linkages, or other parts to change the engine speed. If any adjustments are required contact a Briggs and Stratton Authorised Service Centre for service.

Oil Service

Check the oil level daily before starting the engine and ensure that the correct oil level is maintained. Refer to Assembling the Scarifier Before First Use for oil checking and filling instructions.

Change the engine oil after the first five hours of operation and thereafter according to the Maintenance Schedule.

Drain the fuel by running the engine until the fuel tank is empty.

The oil must be drained from the fill tube.

With engine off but still warm, disconnect the spark plug lead and keep it away from the spark plug.

Remove the dipstick.

Drain the oil into an approved container.

Refill with new oil of the recommended SAE viscosity grade.

Refer to Assembling the Scarifier Before First use.
(Refer fig.18)

Knife Blade Replacement

Please contact your local dealer. Do not attempt to remove the blades yourself.
(Refer fig.19)

High Capacity Air Cleaner Service

The air cleaner system uses a pleated filter with an optional pre-cleaner. The pre-cleaner can be washed and reused.

1. Remove the fastener (A) and the cover (B).
2. Remove the fastener (C) and the filter (D).
3. Remove the pre-cleaner (E), if equipped, from the filter. To loosen debris, gently tap the filter on a hard surface. If the filter is excessively dirty, replace with a new filter.
4. Wash the pre-cleaner in liquid detergent and water. Then allow it to thoroughly air dry. Do not oil the pre-cleaner.
5. Assemble the dry pre-cleaner to the filter.
6. Install the filter and pre-cleaner into the base (F) and onto stud (G). Make sure filter fits securely into the base. Secure the filter with the fastener (C).
7. Install the cover and secure with the fastener (A). Make sure the fastener is tight.

(Refer fig.20)

Do not use petroleum solvents.

Do not use pressurised air.

Spark Plug Service

Replace the spark plug every 100 hours or every season, whichever occurs first. A spark plug wrench is available from any authorised Briggs & Stratton service dealer.

Check the gap (A) with a wire gauge (B). If necessary, reset the gap. Install and tighten the spark plug to 0.76 mm.

(Refer fig.21)

Remove accumulated debris from muffler and cylinder area. Inspect the muffler (A), for cracks, corrosion, or other damage. Remove the spark arrester (B), if equipped, and inspect for damage or carbon blockage. If damage is found, install replacement parts before operating.

(Refer fig.22)

Replacement parts must be of the same design and installed in the same position as the original parts. Other parts may not perform as well, may damage the unit, and may result in injury.

Fig. 18



Fig. 19

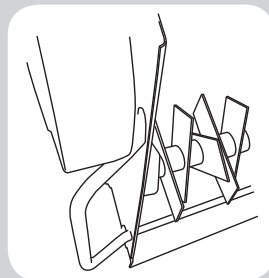


Fig. 20

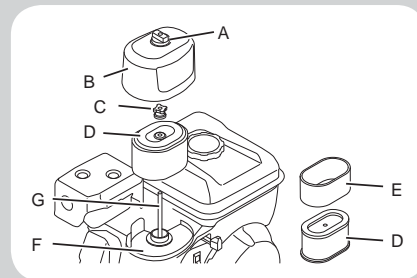


Fig. 21

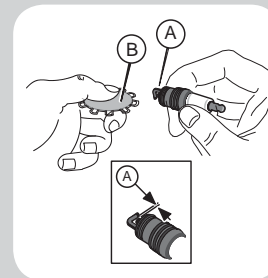
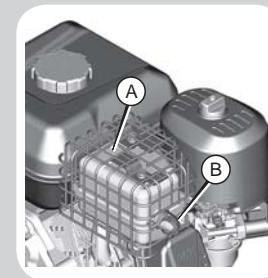


Fig. 22



SCARIFIER MAINTENANCE

Keeping Engine Clean

Remove all thatch debris from the engine including the exhaust, exhaust guard, the air ways in the top cowl and the surrounding deck areas on a daily basis after use. Never spray the engine with water during cleaning. Water can contaminate the fuel. Always clean with a brush or compressed air.

(Refer fig.23)

Thatch debris may clog the engine's air cooling system especially after prolonged operation. The internal cooling fins and surfaces may require cleaning to prevent overheating and engine damage. We recommended that this service be carried out by an authorised Briggs and Stratton dealer.

Collector Bag

Remove thatch debris from the collector bag immediately after use and check its condition for signs of damage.

To prevent accidents replace a damaged collector bag immediately.

(Refer fig.24)

Deck Housing

Remove thatch debris from the top and underside of the deck housing immediately after use. *(Refer fig.25)*

Fertilisers and top dressings are particularly corrosive.

Thoroughly clean the Scarifier deck immediately after use and store well away from corrosive materials.

Securing Nuts and Bolts

Regularly check that all securing nuts and bolts are tight. Replace missing or damaged items immediately.

Lubrication

Lubricate the wheels, pivot points and linkages with engine oil every 25 operating hours.

Apply a good quality medium grease to the inner control cables, at the point of entry and exit from their outer casting.

Storage

To store the handlebar, unscrew the 2 small securing knobs sufficiently to allow it to be pivoted forwards to rest against the Scarifier. Take care to ensure that the control cables do not become snagged at the pivot point and depress the engine stop lever to prevent it being damaged through contact with the engine spark plug.

(Refer fig.26)

Engines stored in excess of 30 days need to be protected with Briggs & Stratton fuel additive or drained of fuel to prevent gum from forming in the fuel system or on essential carburettor parts.

To ensure your Scarifier is maintained in good working order it is important that the following procedure is adopted.

Drain fuel from the engine by running the engine until it stops.

Disconnect the spark plug lead.

Change the engine oil.

Remove the engine spark plug and pour 15ml of engine oil into the cylinder and replace the spark plug. Do not exceed the stated volume of oil as engine damage may occur on restarting. Do not replace the spark plug lead. Slowly pull the engine start grip once to crank the engine. This will distribute the oil and help prevent engine corrosion.

Clean thatch and debris from the engine cylinder, cylinder head cooling fins, under top cowl, around and behind exhaust, exhaust guard and ensure that the collector bag is clean.

Lubricate the Scarifier and treat metal parts with a water repellent anti-corrosion product.

Cover the Scarifier with a protective sheet and store it in a dry, ventilated area.

Fig. 23

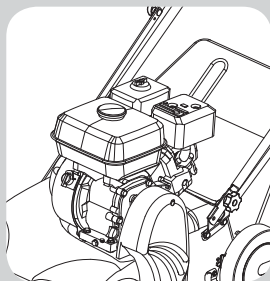


Fig. 24



Fig. 25

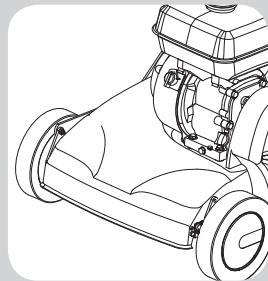
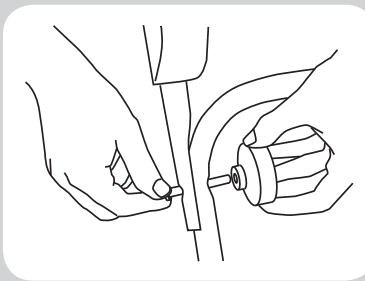


Fig. 26



TROUBLE SHOOTING

PROBLEM	CAUSES	CORRECTIVE ACTION
Engine will not turn over	Engine stop lever released	Operate engine stop lever
	Incorrect oil level	Check oil level
	Obstruction under deck	Remove obstruction
Engine smokes	Excess oil	Check oil level
	Air cleaner cartridge oil soaked or blocked	Service air cleaner
Engine runs then stops	Fuel starvation	Fill fuel tank
	Fuel cap vent blocked	Clean fuel cap vent
Engine will not start	Engine under load	Raise knife blade height
	Incorrect / contaminated fuel	Drain tank and fill with correct fuel
	Spark plug lead disconnected	Connect spark plug lead
	Engine brake not released	Operate engine brake lever
	Faulty spark plug	Clean and adjust the gap or replace
	Wiring fault	Check wiring
Engine runs rough	Spark plug lead becoming disconnected in use	Connect spark plug lead
	Faulty spark plug	Clean and adjust gap or replace
	Air cleaner blocked	Service air cleaner
	Incorrect / contaminated fuel	Drain tank and fill with correct fuel
Discharge chute blocks	Cut height too low	Raise knife blade height
	Collector bag full	Empty collector bag
	No airflow through the collector bag	Clean the collector bag
Scarifier is hard to push	Cut height too low	Raise knife blade height
	Wheels damaged	Inspect and replace as necessary

1 Year Limited Warranty - Home Owner
90 Day Warranty Commercial Use

Hayter Limited warrants to the original user/purchaser that this unit shall be free from defects in material and workmanship under normal use and service for a period of one year from the date of purchase. The manufacturers of the engine furnish their own warranty and services are provided through their authorised network (Refer to "Engine Warranty Statement"). To qualify for the full benefit of the warranty, the Warranty Registration must be completed online within 14 days of purchase by your dealer. If the selling dealer has not completed the Warranty Registration please complete online. Subject to the conditions and exclusions noted in this limited warranty, we shall at our option, repair or replace any part covered by the warranty during the applicable period. If you are in doubt or experience any difficulty, please consult a Hayter Authorised Service Dealer for clarification.

This warranty does not apply to any unit that has been tampered with, altered, misused, abused or used for hire, and will become invalid if non genuine Hayter parts are fitted. This warranty does not cover for minor mechanical adjustments unless they are due to defective material or workmanship. Consult the Owner's Handbook or a Hayter Authorised Service Dealer for assistance when making these adjustments.

Commercial Use

Machines used commercially are excluded from the above warranty. A warranty period of 90 days applies.

Making a Claim

To make a warranty claim, return the unit to a Hayter Authorised Service Dealer along with proof of purchase stating the machine serial number and date of purchase. Subject to the conditions and exclusions in this limited warranty, the Authorised Service Dealer will, at our option, repair or replace any warranted part within the duration of the warranty period.

This limited warranty gives you specific legal rights and is in addition to any statutory rights to which you may be entitled and your statutory rights are not affected by this warranty. If you need additional information concerning this written warranty, or assistance in obtaining services, please write to: HAYTER LIMITED, Service Department, Spellbrook, Bishop's Stortford, Hertfordshire CM23 4BU

UK ONLY: Details of your local Hayter Authorised Dealer can be found on the Hayter website www.hayter.co.uk or contact: Freephone 0800 616298.

The Information Hayter Collects

This warranty is jointly administered by Hayter Limited (Hayter) and its affiliate, Toro Warranty Company (Toro). Hayter and Toro respect your privacy. In order to process your warranty claim and contact you in the event of a product recall, we ask you to share certain personal information with us, either directly or through your local Hayter dealer.

Your personal information will be processed by Hayter in the UK. It will also be entered into the Toro warranty system, which is hosted on servers located within the United States where privacy law may not provide the same protection as applies in your country.

BY SHARING YOUR PERSONAL INFORMATION WITH US, YOU ARE CONSENTING TO THE PROCESSING OF YOUR PERSONAL INFORMATION AS DESCRIBED IN THIS PRIVACY NOTICE.

The Way We Use Information

Hayter and Toro may use your personal information to process warranty claims, to contact you in the event of a product recall, to gauge customer satisfaction, and for any other purpose which we tell you about. We may share your information with our parent, The Toro Company, or with our affiliates, dealers or other business partners in connection with any of these activities. We will not sell your personal information to any other company. We reserve the right to disclose personal information in order to comply with applicable laws and with requests by the appropriate authorities, to operate our systems properly or for our own protection or that of other users.

Retention of your Personal Information

We will keep your personal information as long as we need it for the purposes for which it was originally collected or for other legitimate purposes (such as regulatory compliance), or as required by applicable law.

Our Commitment to Security of Your Personal Information

Hayter and Toro take reasonable precautions in order to protect the security of your personal information. We also take steps to maintain the accuracy and current status of personal information.

Access and Correction of your Personal Information

If you would like to review or correct your personal information, please contact us by email at sales@hayter.co.uk.

March 12, 2015

SERVICE RECORDS & CUSTOMER INFORMATION

Date of Sale:- _____

Engine Type:- _____

Engine:- _____

DEALER DETAILS

SERIAL NUMBER LABEL

Hayter Limited

Spellbrook, Bishop's Stortford,
Hertfordshire CM23 4BU England
Tel: +44 (0)1279 723444 Fax: +44 (0)1279 600338
www.hayter.co.uk